

8 Luke Place Goonellabah

Table of Contents

- | [Property Details](#)
- | [Photo Gallery](#)
- | [Map](#)
- | [Contact For Inspection](#)

Property Details

8 Luke Place, Goonellabah



SOLD BY THE WAL MURRAY TEAM

3  2  2 

Set in a convenient location just moments from the local shopping centre, this beautifully presented family home offers space, style and comfort across two generous levels.

Step inside to discover a stunning open plan living area with soaring raked ceilings and gleaming polished timber floors throughout. The warmth of a wood heater adds cosy charm, plus the air conditioner gives complete all year round comfort. The adjacent modern kitchen is stunning - featuring stone benchtops, dishwasher, gas cooking and ample storage.

The home includes three bedrooms, all with built-in robes, with the main bedroom having ensuite for added privacy and comfort. An additional living area provides the perfect space for a children's play zone or teenage retreat, while downstairs is a large utility room which offers flexibility as a guest room, hobby space or home office.

The home also includes a double lock-up garage with extra storage space ♦ ideal for tools, equipment or a workshop setup.

Outdoors - the front yard is fully fenced, making it pet friendly and secure. To the rear, you'll find a spacious garden area surrounded by lush, leafy greenery ♦ a tranquil space to enjoy.

This is a home that truly caters to the growing family. Call today.

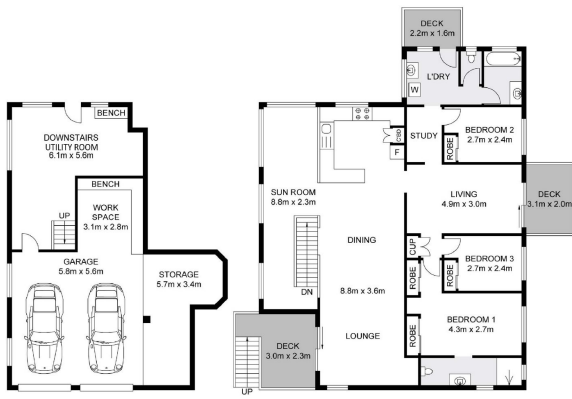
- 3 Bedrooms
- 2 Bathrooms
- 2 Garages
- 1 Ensuite
- Air Conditioning
- Rumpus Room
- Open Fire Place
- Deck
- Floor boards
- Workshop
- Built In Robes

\$675,000

Photo Gallery







LOWER LEVEL

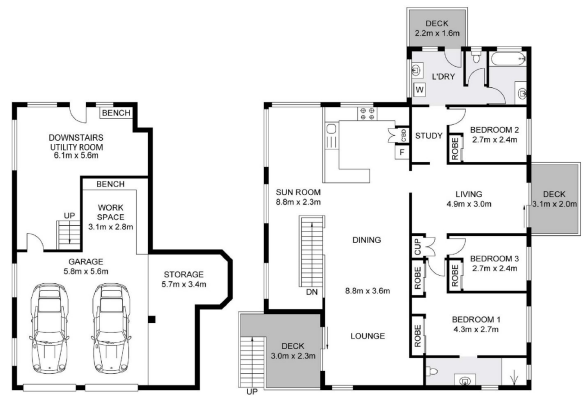
UPPER LEVEL

INT : 161.8m²
EXT : 21.0m²
GARAGE : 55.8m²



Dimensions are approximate. All information contained herein gathered from sources we believe to be reliable. However we cannot guarantee its accuracy and interested persons should rely on their own enquiries. Single intended use purposes only, not to be duplicated © 2023 www.firstnational.com.au - 0411 444 223

8 Luke Place, Goonellabah



LOWER LEVEL

UPPER LEVEL

INT : 161.8m²
EXT : 21.0m²
GARAGE : 55.8m²



Dimensions are approximate. All information contained herein gathered from sources we believe to be reliable. However we cannot guarantee its accuracy and interested persons should rely on their own enquiries. Single intended use purposes only, not to be duplicated © 2023 www.firstnational.com.au - 0411 444 223

8 Luke Place, Goonellabah

Map



Contact For Inspection



BENJAMIN CONTE

LICENSED REAL ESTATE AGENT

0408 368 913

ben@walmurray.com.au